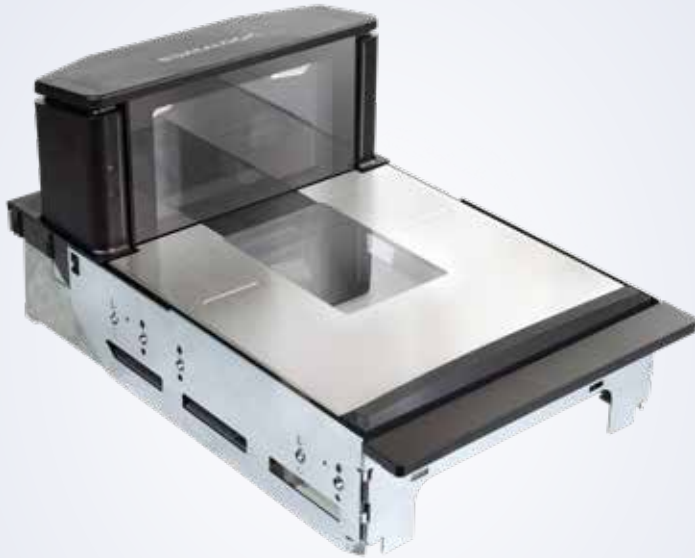


MAGELLAN™ 9600i



Scanning Excellence with an AI Edge



THE NEXT GENERATION IS HERE

The #1 selling 'in counter' scanners for assisted and self-checkout are now even better. Fresh styling, rugged design, industry-leading scan performance and new options that enable Artificial Intelligence (AI) at the checkout put the Magellan 9600i portfolio in a class of its own.

With basic and advanced configurations, the 9600i scanner and scanner/scale is the perfect companion for Point of Sale (POS) systems in all high throughput checkout environments.

The ability to choose from 3 chassis lengths and multiple checkstand mount options allows customers to have a tailored solution that solves all of their assisted and self-checkout needs.

ENHANCING THE CASHIER OR CUSTOMER EXPERIENCE

Packed with the latest imaging technology, the 9600i scanners feature the largest scan volume in their class. This ensures fastest read rates and ease of use regardless of 1D, 2D, GS1 or Digimarc® symbologies.

The new Magellan scanners feature smooth surfaces to ensure the above counter areas are easy to clean and sanitize.

The 9600i offers an optional external mounted customer-facing reader enabling customers to scan mobile devices and coupons independent from a cashier in assisted lanes.

FEATURES FOR TODAY AND THE FUTURE

Magellan 9600i is powered by QuadVision™, a multi-core processor and multi-camera system with embedded Linux operating system to future-proof the platform. ScanSentry™ color camera options and neural processors result in a checkout that is fully enabled to support Artificial Intelligence (AI) software that will boost customer satisfaction and dramatically improve loss prevention.

FEATURES

- Magellan 9600i features QuadVision™, a powerful IMX8 multi-core processor utilizing 4 cameras (2 horizontal and 2 vertical) that will deliver multiple high resolution images for each scan. Combine the powerful processors, 5-sided image capture and Datalogic's legendary software and you have previously unheard of performance to decode the most difficult and damaged barcodes. In addition, two optional color cameras can be used for machine learning image capture and simultaneous video streaming via Ethernet or USB 3.0 for loss prevention in future releases.
- Optional built-in neural processors and accelerators enable trillions of operations per second inside the scanner eliminating a need for extra servers or cloud connections at the checkout.
- Be ready for the future GS1 Digital Link symbology which links valuable manufacturing and health safety details to each transaction.

INTEGRATED LOSS PREVENTION

ScaleSentry Technology

- Monitors the sides of the scale platter with an infrared (invisible) beam to detect if fruit or produce is misplaced on the scale platter causing the item to be under-weighted.

All-Weights™ Scale Platter

- The All-Weights scale platter design provides a total scanner weighing surface including the top of the bonnet, allowing the user to properly weigh produce that is too long to fit on the platter surface.

ScanSentry

- The 9600i can detect item movement across the platter and alert the POS system if no barcode was detected. This can be augmented with color cameras and Artificial Intelligence to create 'best in class' loss prevention and item recognition solutions.



MAGELLAN 9600i (Scanner only: 9610, 9611, 9612; Scanner/Scale: 9621, 9622)

TECHNICAL SPECIFICATIONS

DECODING CAPABILITY

Auto Discriminates all Retail Barcodes	EAN/JAN/UPC, Code 128, EAN/JAN Composites; GS1 DataBar Composites; GS1 DataBar Expanded Stacked; GS1 DataBar Stacked; GS1 DataBar Stacked Omnidirectional; MicroPDF417; PDF417; UPC A/E Composites. Aztec Code; Data Matrix; QR Code, Micro QR, Digimarc Barcode and all future GS1 Codes.
Illumination	Multiple diffused LEDs: orientation and wavelength optimized for eye comfort.
Scan Indicators	Visual: Good-read confirmation for all reading planes; Audio: 85 dB Speaker - Adjustable Tone and Volume plus supports WAV file formats

COMMUNICATIONS INTERFACES

Host Multi-Interface	RS-232 / USB Multi-Interface: OEM (IBM) USB Plus Power (Scanner / Scale); RS-232 (Scanner) / RS-232 (Scale); RS-232 (Scanner) or Single Cable RS-232 (Scanner / Scale)
POS Operating Systems	Windows 11, Windows 11 IoT, Linux, Android™ OPOS and JavaPOS utilities are available for download
Auxiliary Ports	Powered USB Host (Type A) (x2); Powered RS-232; Remote Scale Display; EAS Controller Ports; Sensormatic, Interlock
Ethernet Ports	1 x Ethernet is standard; Optional 7 Port Ethernet switch (IEEE1588) NOTE: Switch requires an external 48V power supply

OPTIONAL SCALE FEATURES

Magellan Dual Interval Scale Technology	Minimum Increment: Range 1: 0.002 kg / 0.005 lb; Range 2: 0.005 kg / 0.010 lb Scale Capacity: Range 1: 0 - 6.0 kg / 0 - 15.0 lb; Range 2: 6.0 - 15.0 kg / 15.0 - 30.0 lb
Magellan Single Interval Scale Technology	Minimum Increment: 0.005 kg / 0.010 lb; Scale Capacity: 0 - 15.0 kg / 0 - 30.0 lb
Adaptive Scale	Magellan supports Bizerba, Mettler Toledo, and Digi

LOSS PREVENTION

All-Weighs Scale Platter	Integrated horizontal and vertical scale platter surfaces increase active weighing area for easy, accurate weighing of large items.
ScaleSentry	ScaleSentry is an infrared platter detection system to provide shrink prevention; Configurable audio / visual indicators identify items placed outside weighing surface.
EAS Features	Integrated EAS Antenna for Checkpoint and Nedap. Sensormatic Deactivation Controller integrated with Datalogic SmartSentry™ technology; Scanner provides Good-read / EAS Status Indicators
ScanSentry	Magellan 9600i can host a variety of Artificial Intelligence solutions that improve customer experience and reduce losses at the checkout.

PHYSICAL CHARACTERISTICS

Dimensions	Height (above counter): 12.9 cm / 5.1 in Depth (below counter): 10.2 cm / 4 in Width: 29.2 cm / 11.5 in Length: Short Shelf- 35.2 cm / 13.9 in Medium Shelf - 39.9 cm / 15.7 in Long Flange- 50.7 cm / 20.0 in
Optical Features	Monochrome Imagers: Four 1MP global shutter imagers (1280 x 800) at 30 frames/second Color Imagers: Up to two color 1MP imagers (1280 x 800), Ethernet or USB3.0 connections

ELECTRICAL

Power Requirements	Scanner Power Consumption: 12 VDC Operating (Nominal): 9.3 Watts; Sleep: 7.3 Watts; Optional scanner DC brick: AC Input: 100 - 240 VAC, 50-60 Hz; Optional Ethernet 48 VDC brick: AC Input: 100 - 240 VAC, 50-60 Hz
---------------------------	--

ENVIRONMENTAL

Ambient Light	0-86,080 lux
ESD Protection	25 kV air discharge
Humidity (Non-Condensing)	5 - 95%
Temperature	Operating: 10 to 40 °C / 50 to 104 °F Storage/Transport: -40 to 70 °C / -40 to 158 °F

SAFETY & REGULATORY

Agency Approvals	The product meets necessary safety and regulatory approvals for its intended use. See the Quick Reference Guide for a complete list of certifications.
Environmental Compliance	Complies to China RoHS; Complies to EU RoHS; Complies to R.E.A.C.H. - EC1907/2006

UTILITIES

Aladdin™ Configurator	Datalogic Aladdin provides customers the opportunity to manage the configuration of handheld or fixed position products, and allows firmware updates, advanced formatting through an intuitive user interface.
Magellan SDK(s)	Datalogic provides developer tools to support POS integration and the optional AI enablement HW functionality (Color cameras, Neural Processors, and Ethernet expansion).
Remote Management Capabilities	Current Diagnostic reporting utilizes WMI (OPOS and JavaPOS) and MBeans (JavaPOS); Host Download Supports IBM Director, Wavelink Avalanche™ and other ERP management solutions.

AI ENABLEMENT FEATURES (OPTIONAL)

Image Capture	Magellan 9600i offers an integrated vertical plane color camera (VCCM), and Horizontal plane color camera (HCCM)
Neural Processors	Magellan 9600i will soon offer embedded neural Processors for executing AI inference models inside the scanner
Ethernet Switch	7 port ethernet switch allows the Magellan to connect up to 2 integrated and 3 external cameras for creating a 'zone of cognition'.

WARRANTY

Warranty	1-Year Standard Factory Warranty
-----------------	----------------------------------

ACCESSORIES



90ACC0340 Single Display/Single Interval



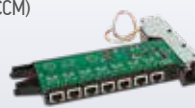
90ACC0343 Dual Display/Single Interval



90ACC0415 Vertical Color Camera (VCCM)



90ACC0414 Horizontal Color Camera (HCCM)



90ACC0416 Ethernet Switch



Tensor Processing Unit (TPU)
Coming soon